



DELANCEY
UK SCHOOLS

CHESS CHALLENGE

Activity Booklet

Saturday 26/09/2020



Introduction

The UKCC weekly activity booklet will be sent out every Saturday morning and contains chess puzzles and activities for a range of ability levels.

Players are encouraged to at least try and complete the page most relevant to their ability level (see table below). However you are welcome to tackle the entire booklet! At the end of the booklet there are some more general puzzles / activities for everyone to enjoy

Solutions

Solutions will be posted alongside the following weeks activity booklet and there will also be a video solution guide.

Please email us any feedback or ideas for future puzzles!

Ability Levels

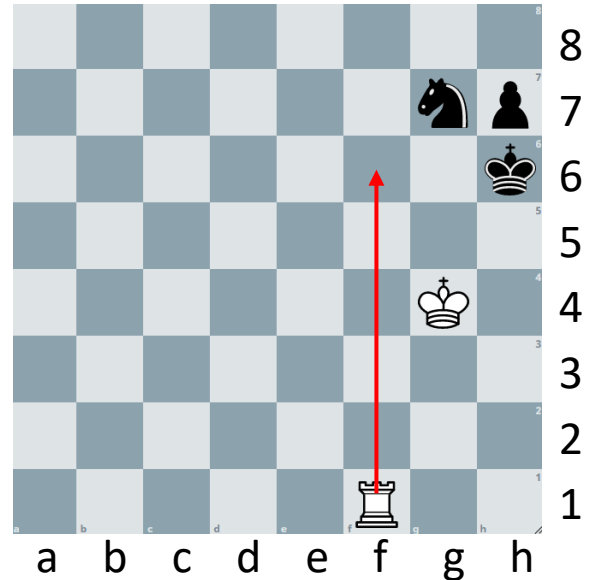
Club	Description	Approximate ECF Grade *
DECA – Club	Complete beginners and those with an incomplete grasp of the rules	Ungraded
MEGA – Club	Know the rules but little grasp of planning what to do beyond capturing and quick checkmates. Little to no tournament experience	0 – 59
GIGA – Club	Players with some tournament experience looking to “level up”	60 – 99
TERA – Club	More experienced players who have won or placed highly in local competitions	100 – 129
EXA - Club	Very experienced players with success at National Level events	130 – 159

Example

Below are examples of how you might write your solution to a puzzle presented in the booklet. Or you might prefer to just solve them in your head – completely up to you!

Q: Can you find checkmate in one for white?

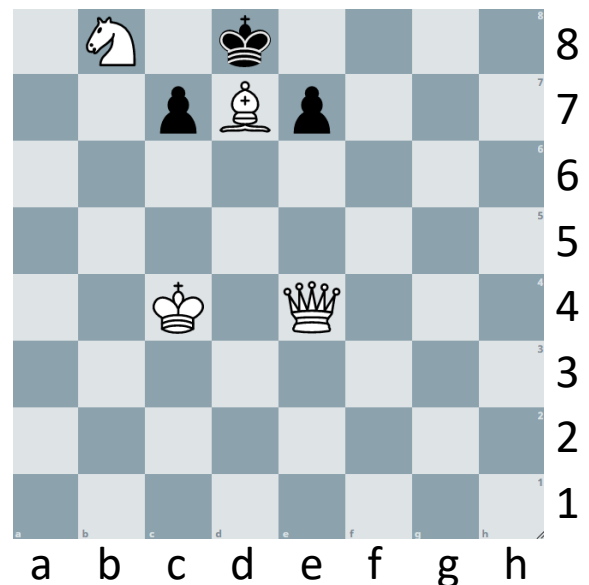
Here, because the solution is only one move, you might draw arrows on the board or you can use the lines below to answer – or both!



Rf6#
.....
.....

Q: Can you find checkmate in two for white?

Here, the solution is a bit (OK a lot!) trickier and requires consideration of multiple variations. If you are familiar with coordinates, it is probably best that you write your answer out as shown.

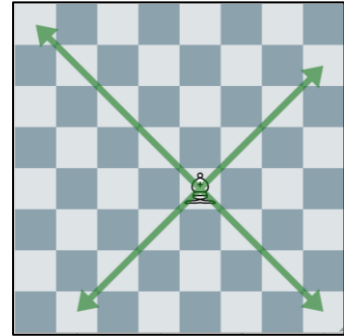


1.Qe1 e6 (1..c6 2.Qa5#) 2. Qh4#
.....
.....

Deca

The bishop moves along the diagonals (like an "X" shape).

See if you can solve the 'hungry bishop' puzzles below: try and capture all the stars in as few moves as possible. Write down how many moves it takes you.



1

a b c d e f g h

.....
.....

3

a b c d e f g h

.....
.....

2

a b c d e f g h

.....
.....

4

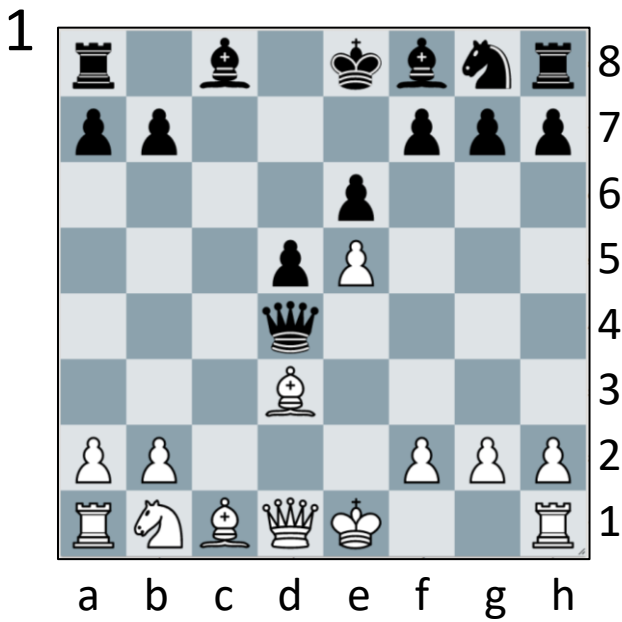
a b c d e f g h

.....
.....

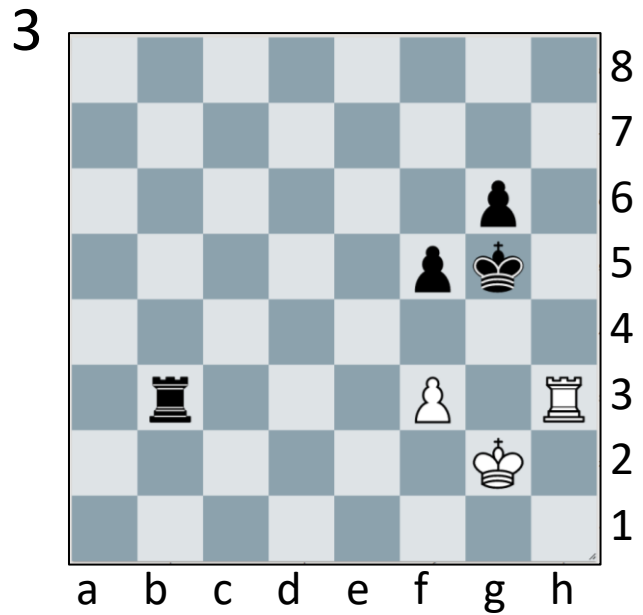
Mega

In the diagrams below it is white play. Your task is to find a move which wins material. The theme of the puzzles is “Discovered Attack”.

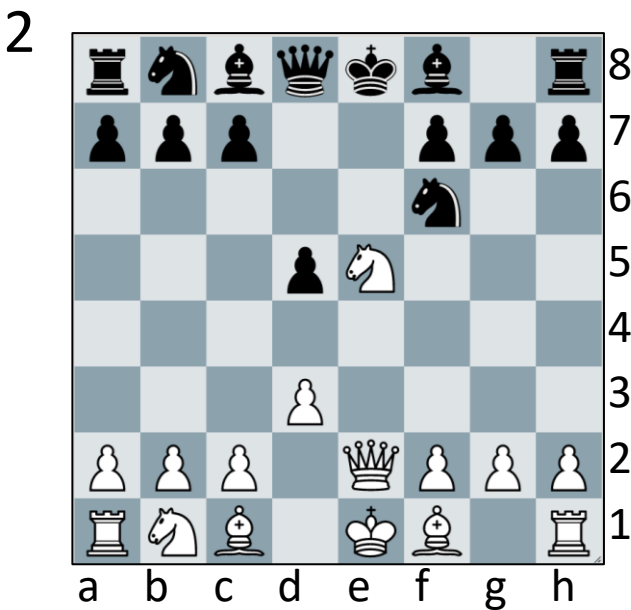
In a Discovered Attack the front piece moves out of the way to reveal an attack by a piece behind it. If the front piece also attacks a piece then this is a form of double attack.



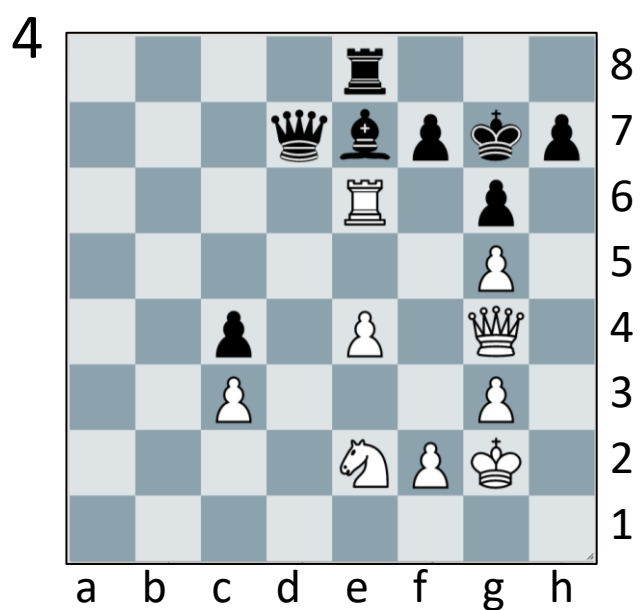
.....



.....



.....



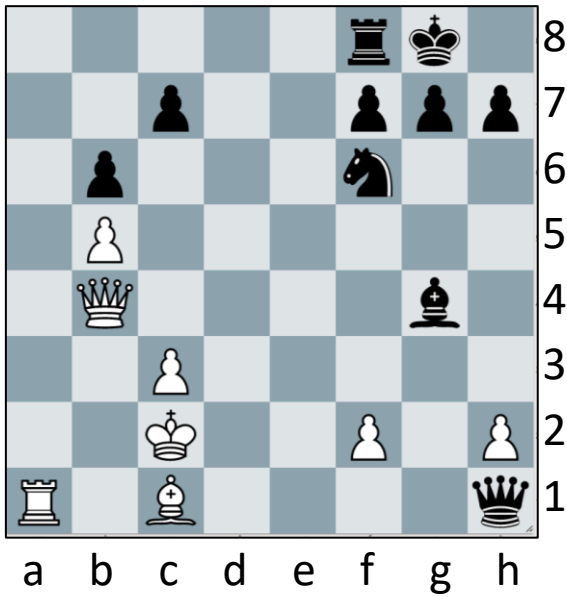
.....

Giga

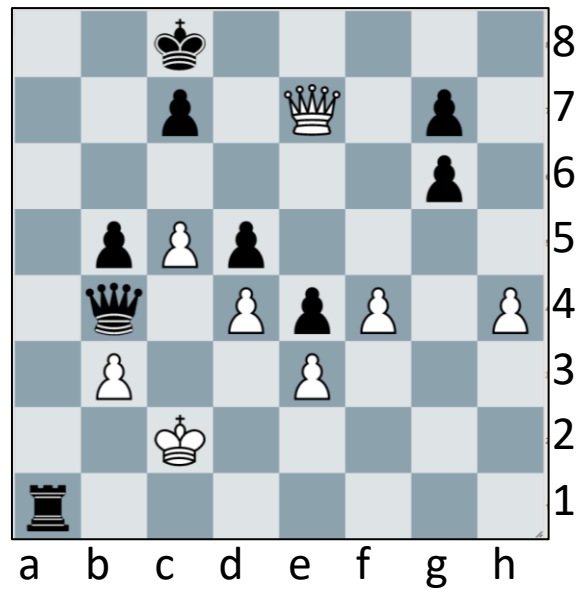
In the diagrams below it is white play. Your task is to find a move which wins material or leads to a mating attack. The theme of the puzzles is “Discovered Attack”.

In a Discovered Attack the front piece moves out of the way to reveal an attack by a piece behind it. If the front piece also attacks a piece then this is a form of double attack.

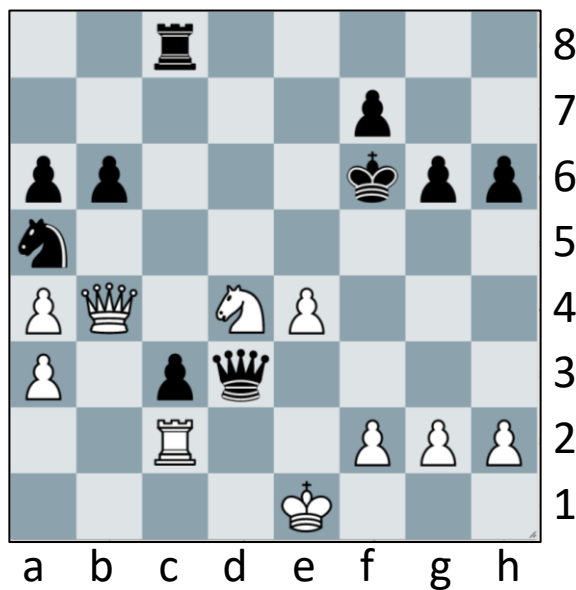
1



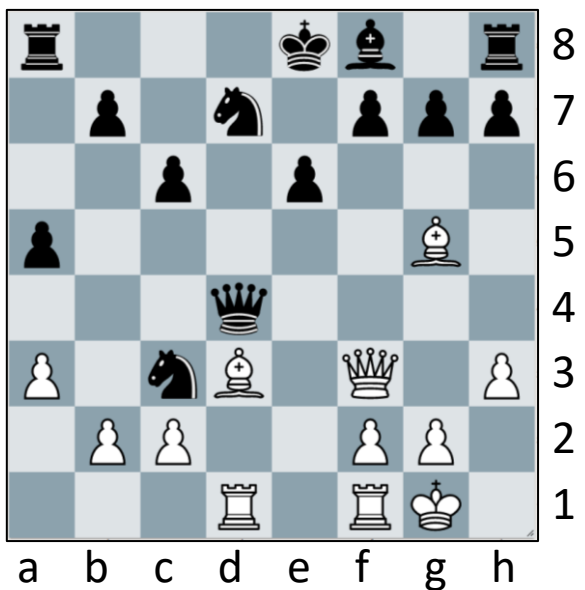
3



2



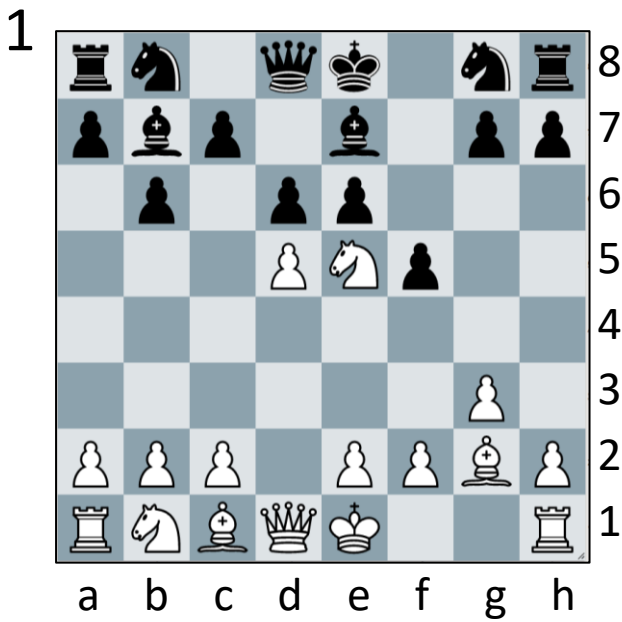
4



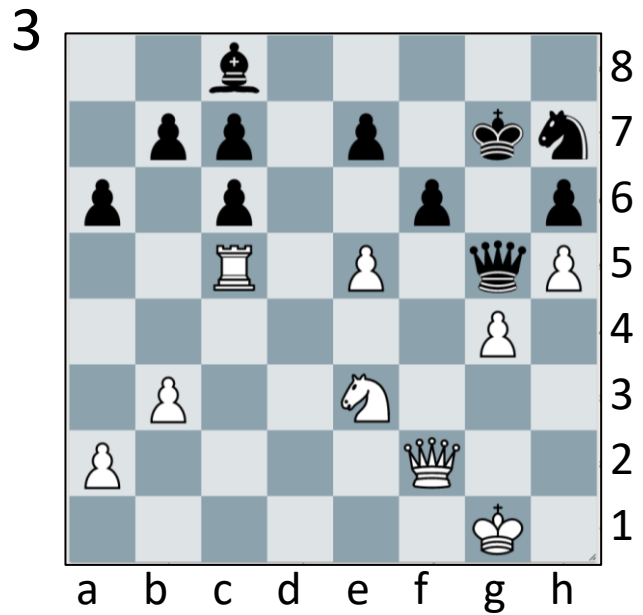
Tera

In the diagrams below it is white play. Your task is to find a move which wins material or leads to a mating attack. The theme of the puzzles is “Discovered Attack”.

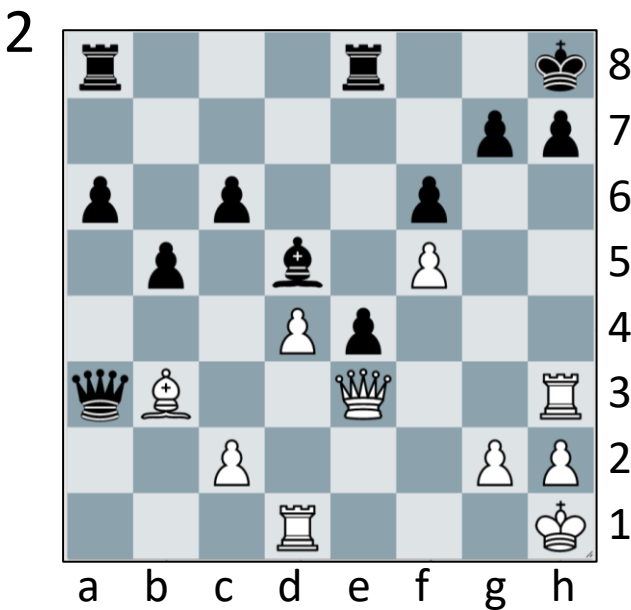
In a Discovered Attack the front piece moves out of the way to reveal an attack by a piece behind it. If the front piece also attacks a piece then this is a form of double attack.



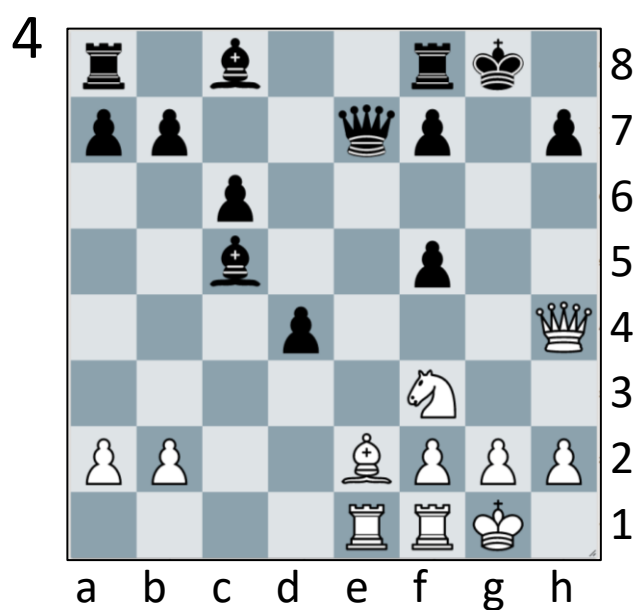
.....
.....



.....
.....



.....
.....

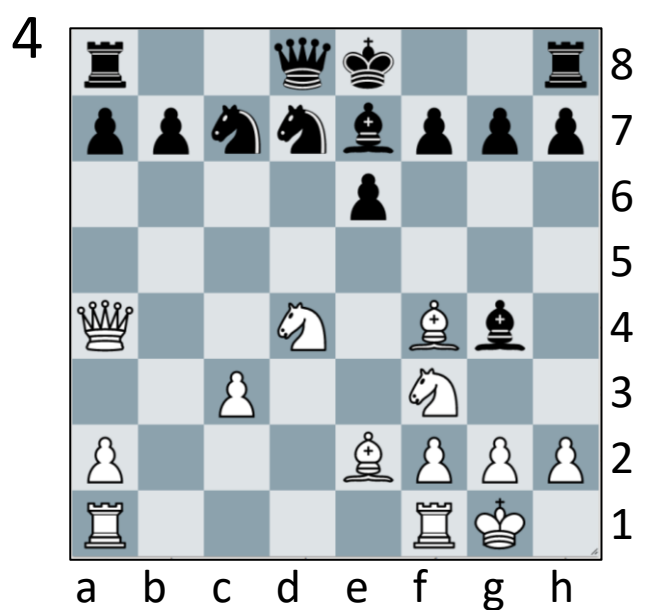
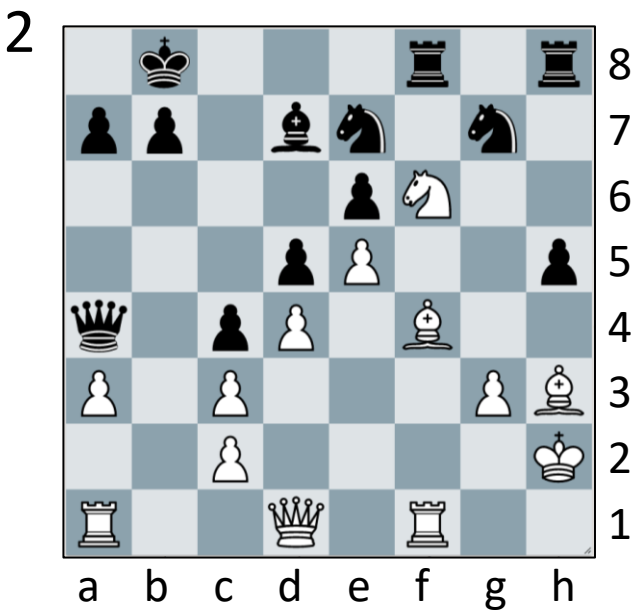
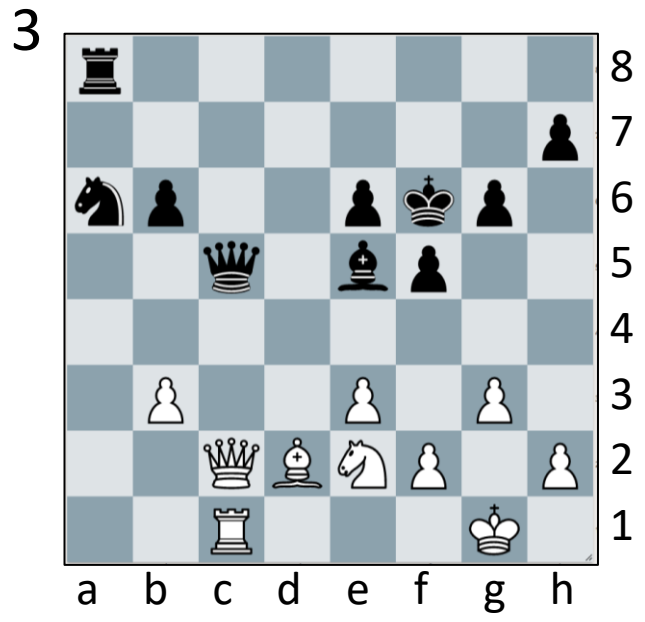
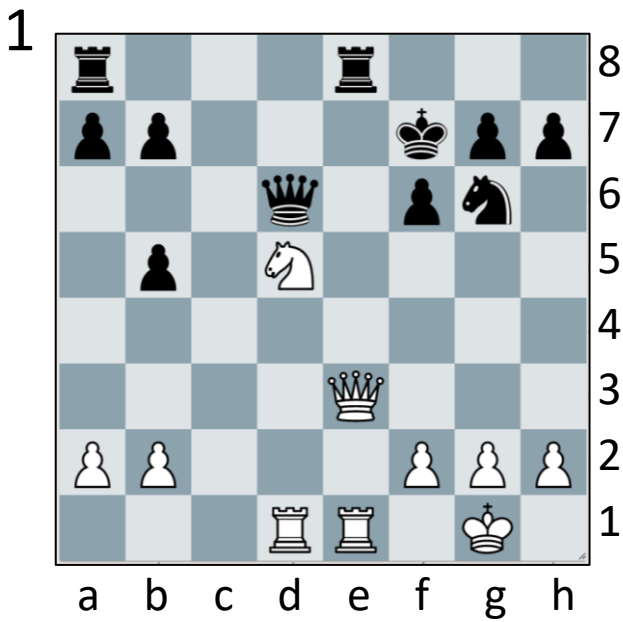


.....
.....

Exa

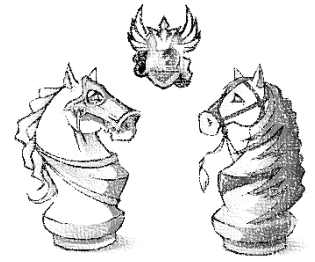
In the diagrams below it is white play. Your task is to find a move which wins material or leads to a mating attack. The theme of the puzzles is “Discovered Attack”.

In a Discovered Attack the front piece moves out of the way to reveal an attack by a piece behind it. If the front piece also attacks a piece then this is a form of double attack.



Fun Puzzles

Over the next couple of pages you will find some more casual puzzles starting out easy and getting much harder!



Word Search - Easy

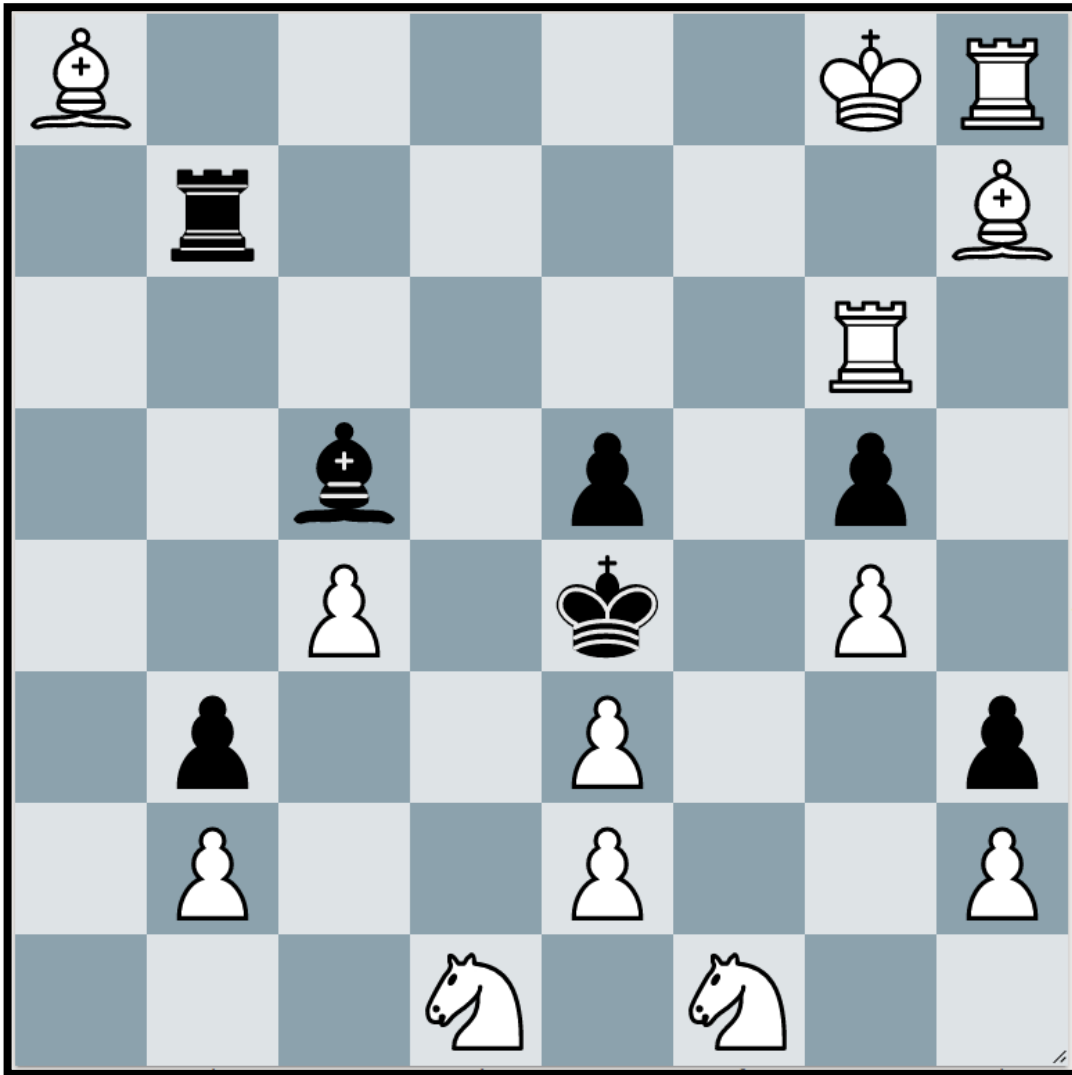
Greatest English Chess Masters

E H J T X G N J T U S W N S O
N O T Y R N S S P E E L M A N
R D G W U O J H N V K I Z H I
U G O N I A H O M J G M O S T
B S W Z L J T S O I P W A E X
K O U V H N H I N U E F L L P
C N I P U M P C I L N K X I O
A Y D A Y B A E L H D J M M Z
L G T Z D S J B N W W C J T I
B S U J L C B Z V R Q L X Y A
S M A D A Q V Z M N O P X L U
N W J U I G G L W R C S L K Q
V Y E U G F Y D O Q A A E R B
M P I G P J Z S M F D P E J Z
B T Z I T U Q K Q B H K Y M K

Adams
Blackburne
Hodgson
Howell
Miles
Nunn
Penrose
Short
Speelman
Staunton

Not as easy as it sounds...

Difficulty: Medium

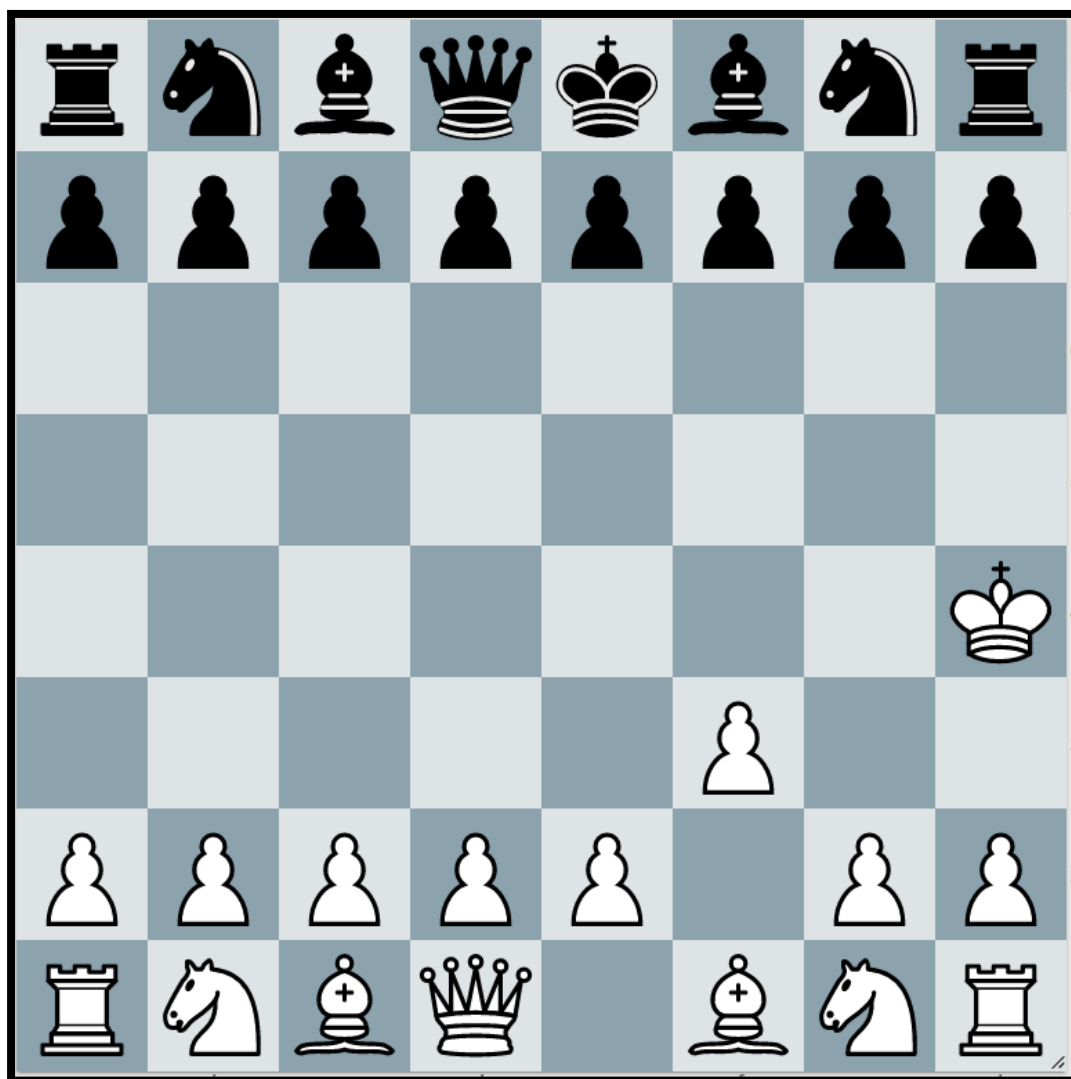


White to play and mate in 1. Oh wait – that is way too easy!

But let's see if you can find a move that doesn't checkmate black...

The Mad King

Difficulty: Hard



White's King has gone a bit mad – the first 4 moves (and the only moves!) that white plays in this game are 1.f3 2.Kf2 3.Kg3 4.Kh4.

Bearing in mind that we must allow white to make these 4 moves – can we checkmate the white king on black's 4th move?

Take a look at...

If you enjoyed solving the tactics puzzles today you might enjoy WFM Sarah, and GM Danny King's Chessable course on tactics!

In the course you can find lots of puzzles as well as engaging videos and most importantly leaderboards!

You can find out more online or using the link below.

<https://www.chessable.com/tournament-ready-tactics/course/33346/>



👍 Learn chess with Sarah and Danny!

So you want to have fun playing chess? But you also want to get good at chess? And you want to WIN at chess?

Join the **Delancey UK Chess Challenge**, "The World's Largest Chess Competition", and see if you can get yourself *Tournament Ready*.

Win badges, bonus points and complete the level!

Some of Britain's best players have played in the UKCC - such as the brilliant Grandmaster David Howell. Maybe one-day people will talk about you like that and YOU will have that title?

Contact Us

Any questions, comments or ideas about anything chess related we'd love to hear from you!

Email: admin@ukchess.co.uk

Phone: 0161 485 1729

Facebook: <https://www.facebook.com/DelanceyUKSchoolsChessChallenge/>